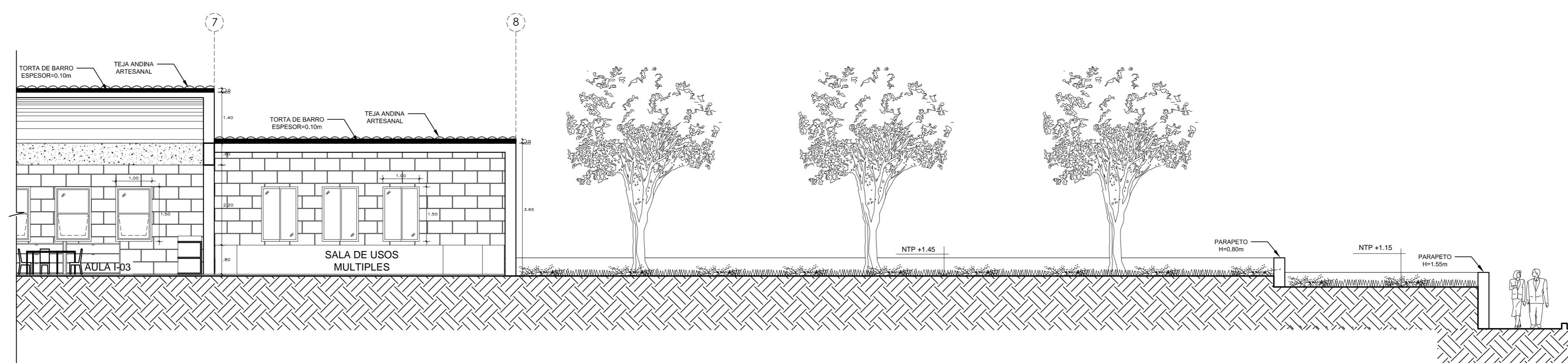
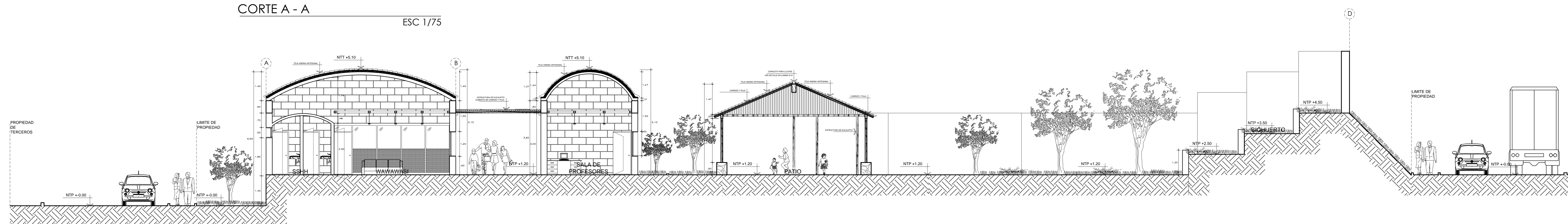


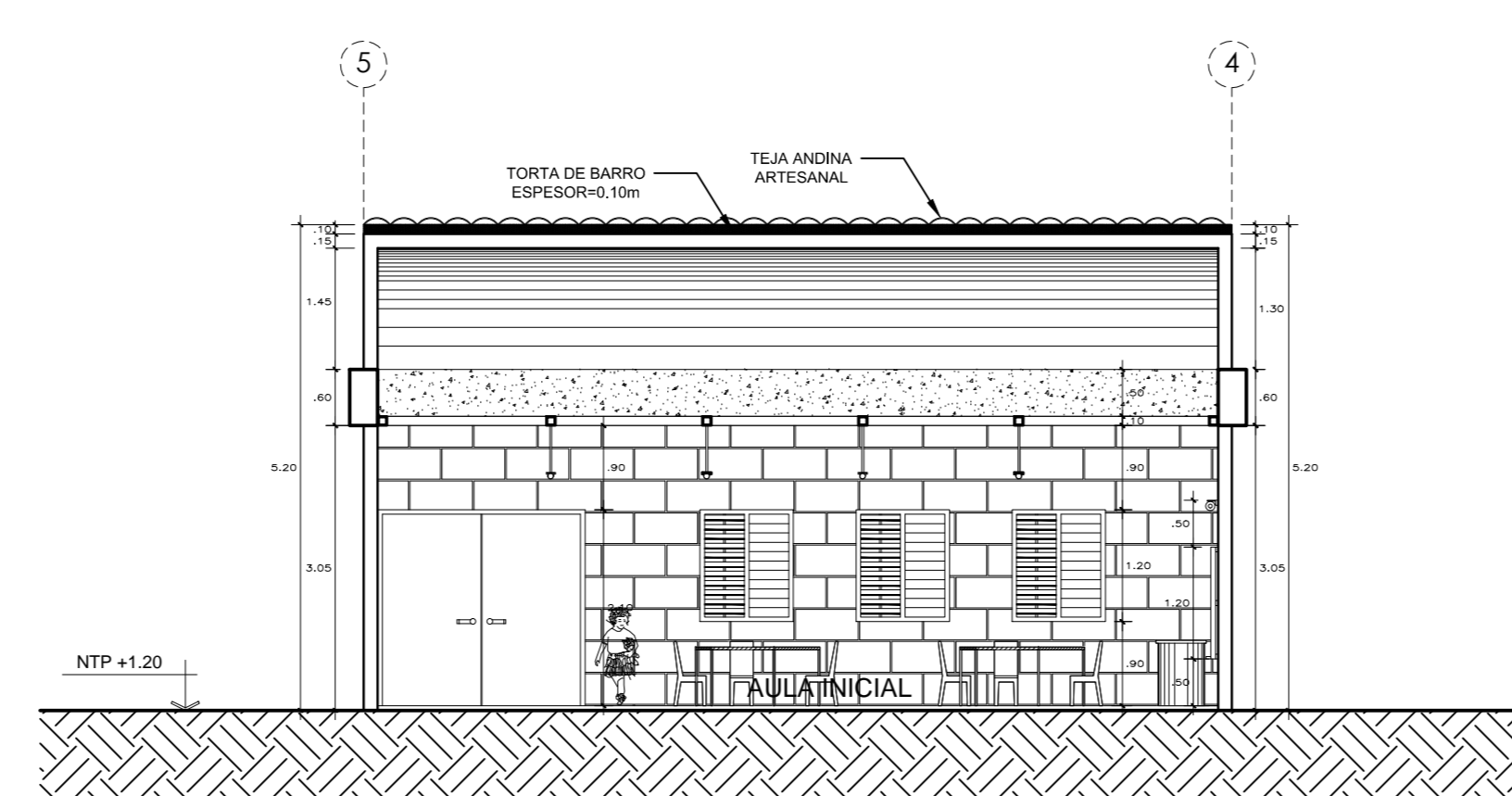
CORTE A - A  
ESC 1/75



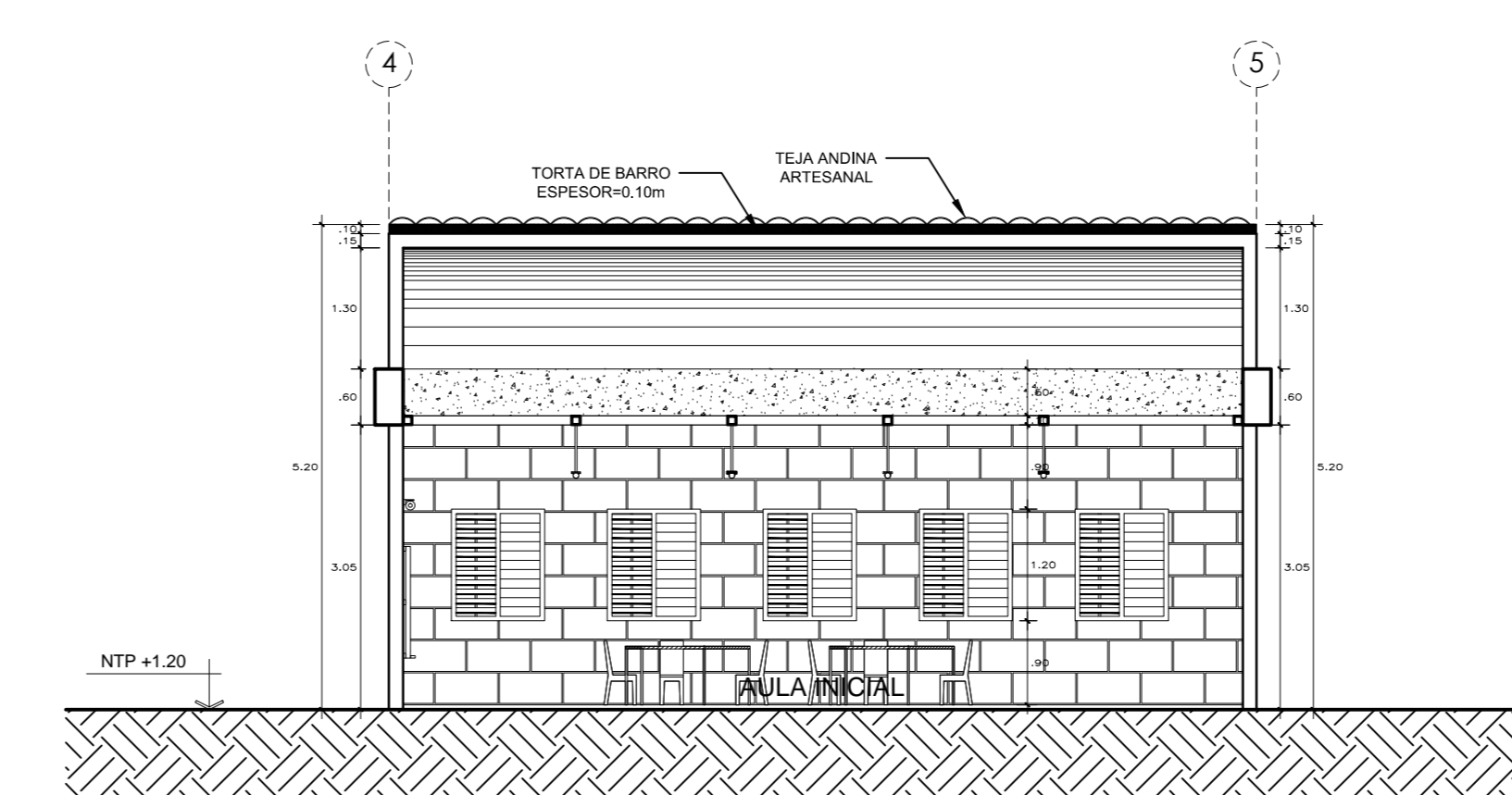
CORTE A - A  
ESC 1/75



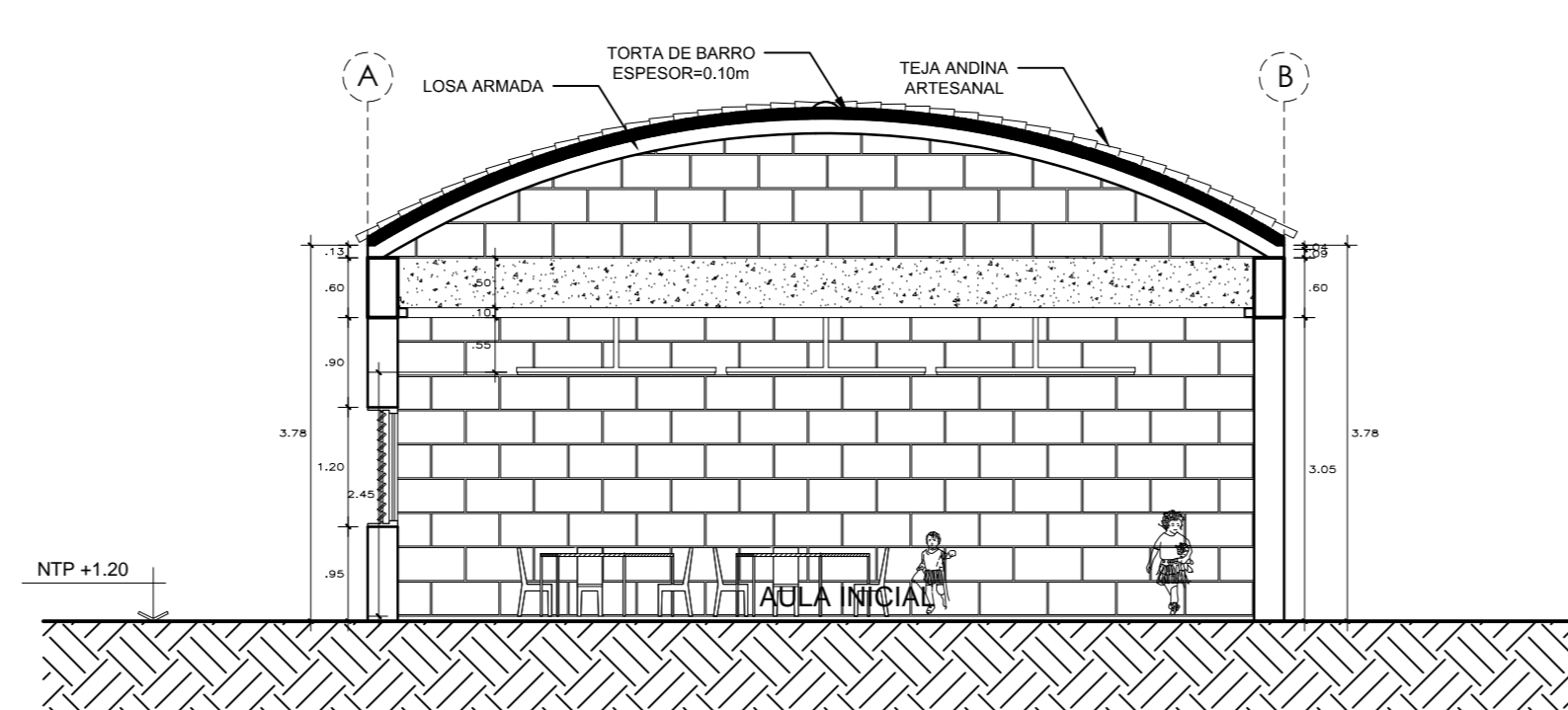
CORTE B-B  
ESC 1/75



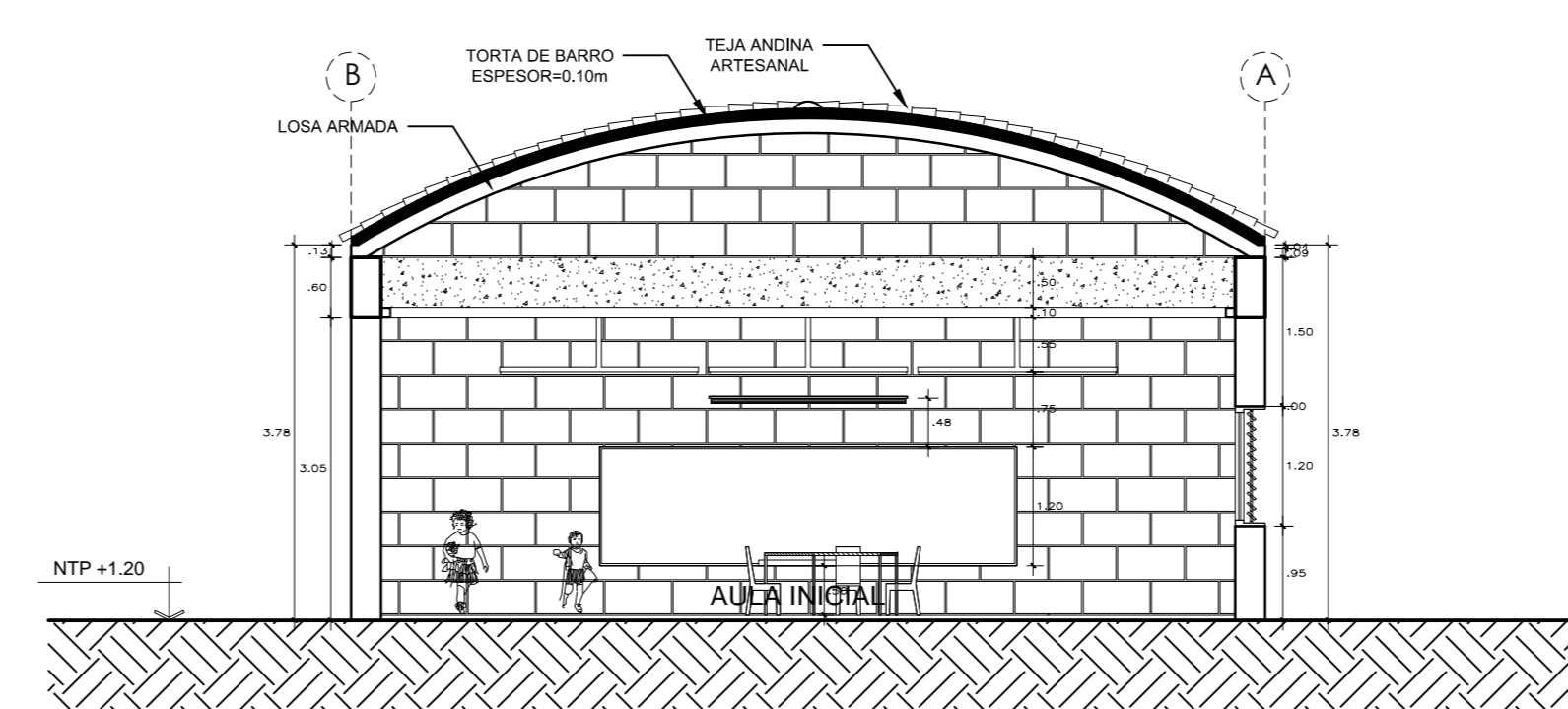
AULA INICIAL - CORTE A''-A''  
ESC 1/75



AULA INICIAL - CORTE B''-B''  
ESC 1/75

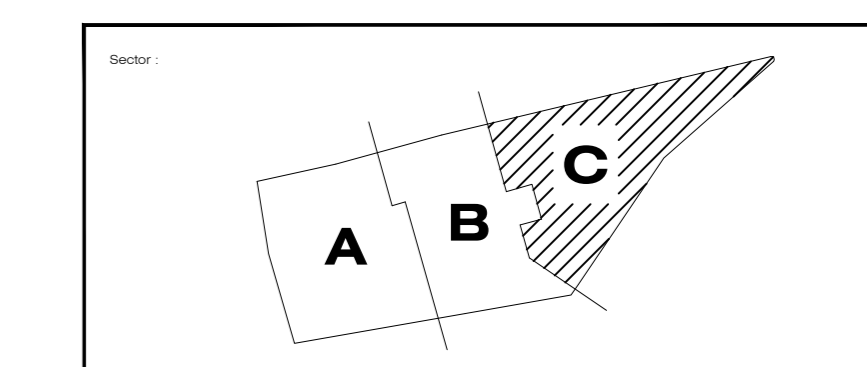
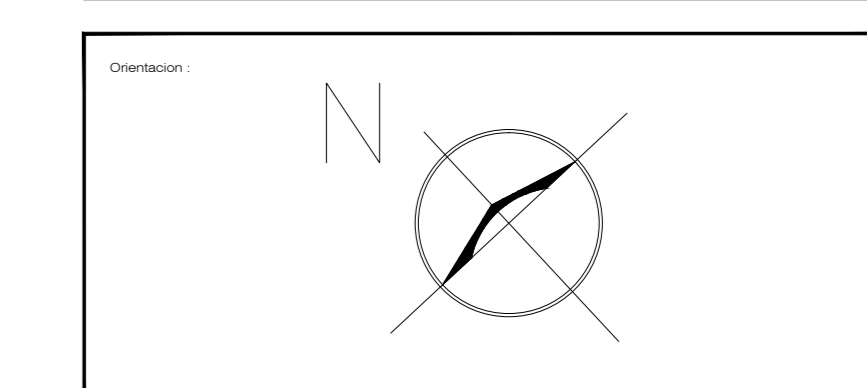


AULA INICIAL - CORTE C''-C''  
ESC 1/75



AULA INICIAL - CORTE D''-D''  
ESC 1/75

CUADRO DE VANOS				
	ALF.	ALTO	ANCHO	CANT.
P-01	-	2.10	2.20	31
P-02	-	2.10	0.90	06
P-03	-	2.10	0.90	13
P-04	-	2.10	2.20	02
P-05	-	2.10	0.90	16
P-06	-	2.10	2.00	03
P-07	-	2.10	3.00	03
P-08	-	2.10	0.90	01
P-09	-	2.10	2.20	01
P-10	-	2.10	1.20	01
P-11	-	2.10	0.90	03
P-12	-	2.10	2.20	02
P-13	-	2.10	0.90	03
P-14	-	0.90	0.90	01
P-15	-	2.10	2.50	01
V-01	0.90	1.20	1.00	65
V-02	2.10	0.40	1.00	34
V-03	2.10	0.40	0.50	28
V-04	0.90	1.20	0.50	20
V-05	0.90	1.20	3.25	01
V-06	0.90	1.20	6.00	01
V-07	0.90	1.20	1.60	01
V-08	0.90	1.20	2.40	01
V-09	0.90	1.20	1.20	01



Tesis para optar el título profesional de Arquitecto

Centro de educación básica regular en el Valle del Coica

Departamento: Arequipa  
Provincia: Caylloma  
Distrito: Yanque

**CORTES SECTOR C**

Bach. Arq. Romano Garavito-Saltri Casas

Escala: 1/75 Fecha: MARZO 2017

**A-08**